



WINNELLIEHYDRAULICS

THE *TECHNICAL SUPPLY* SPECIALISTS



GLOBALY CONNECTED
LOCALLY INVESTED

ENERGY · MINING · INDUSTRIAL

+61 8984 4939

www.winnelliehydraulics.com

sales@winnelliehydraulics.com

WINNER

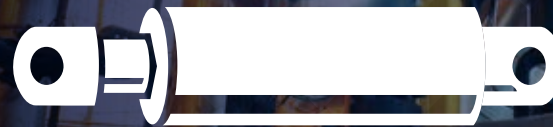


NTEIA

2018 CHIEF MINISTER'S
NT EXPORT AND INDUSTRY AWARDS

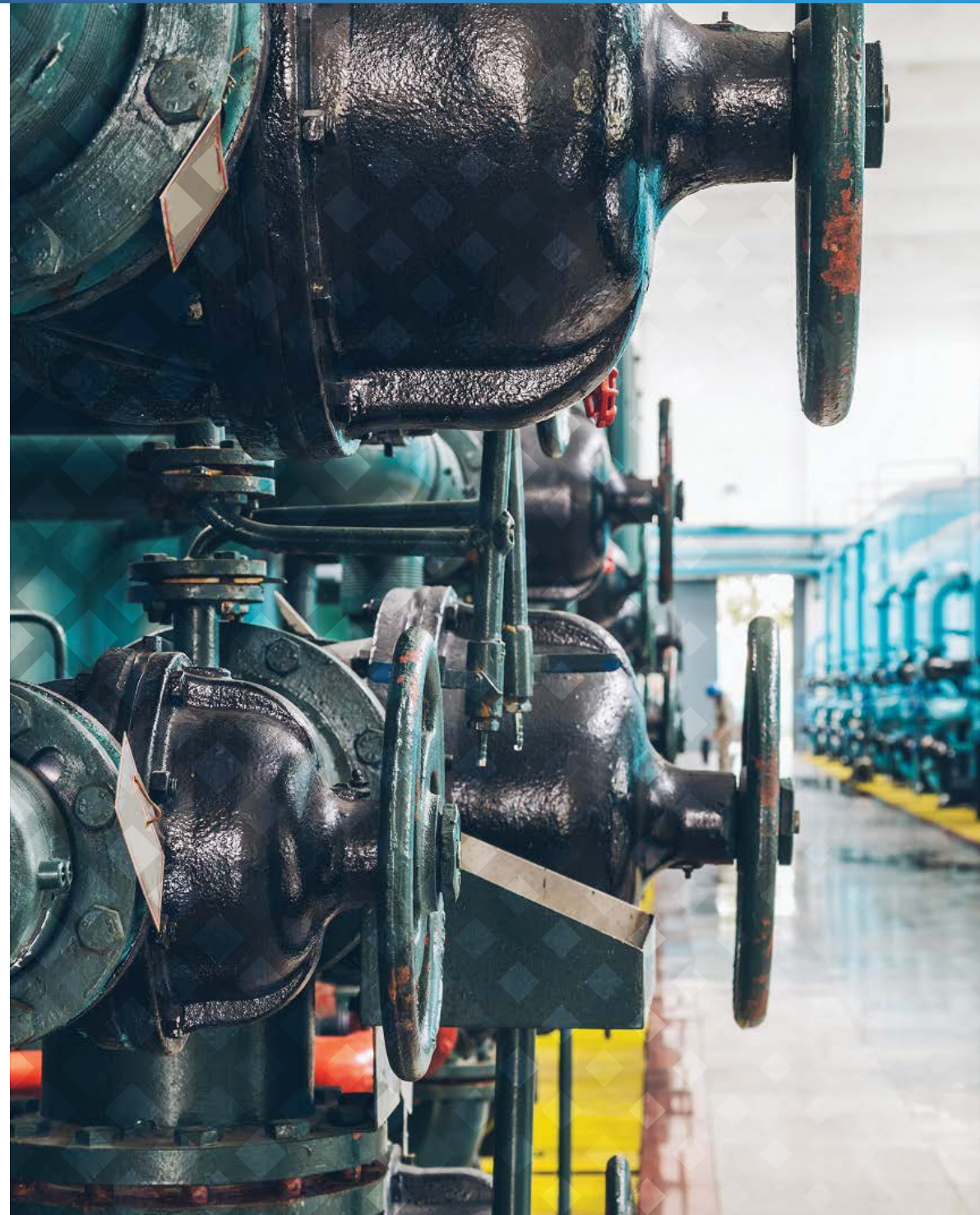
Department of Trade
Business and Innovation

2018 RESOURCE
SUPPLY AND
SERVICE AWARD



WINNELLIEHYDRAULICS
THE *TECHNICAL SUPPLY* SPECIALISTS

Leading provider of products and services to the Energy, Mining & Industrial sectors for more than 30 years



OUR TRUSTED PARTNERS

ENERPAC 

Parker

HYDAC

Mann Tek[®]

Rexroth
Bosch Group

EATON

STAUFF



The Right Connection[®]

oliver valves



hydratight
PROVIDING SAFE RELIABLE CONNECTIONS



rotork[®]

Atlas Copco



TOOLS



WINNELLIEHYDRAULICS
THE *TECHNICAL* SUPPLY SPECIALISTS

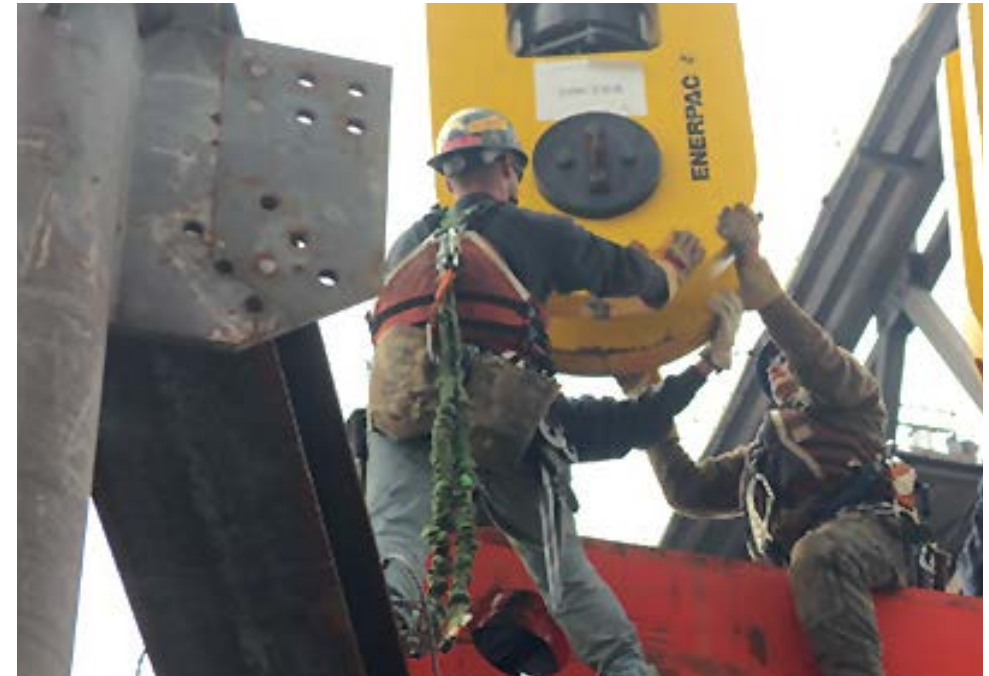
INDUSTRIAL HYDRAULIC TOOLS

For more than 50 years Enerpac hydraulic tools have delivered reliable and dependable solutions for virtually every industrial application. Our products are designed to increase productivity and make work safer and easier to perform. We're focused on providing our customers with the most comprehensive line of globally supplied, locally supported industrial tools and heavy lifting solutions.

OUR HYDRAULIC TOOL RANGE INCLUDES:

- Cylinders
- Pumps
- Gauges
- Presses
- Hydraulic punches
- Bearing pullers
- Cutters & crimpers
- Hoses, adaptors and accessories

ENERPAC



LIFTING CYLINDERS

- Single Acting
- Lightweight Aluminium
- Low Height
- Hollow Plunger
- Double Acting
- High Tonnage
- POW'R LOCK Lifting Jacks



SINGLE / DOUBLE ACTING PUMPS

- Lightweight Manual Series
- Steel Manual Series
- Pneumatic PAT Series
- Electric ZU4 Series



BOLTING TOOLS

- Square Drive Torque Wrenches
- Cassete Drive Torque Wrenches
- Electric/Pneumatic Pumps
- Flange Alignment Tools
- Bolt Tensioners



POW'R LOCK

- 200T capacity
- Models with 14" or 26" stroke
- Easy manoeuvrability
- Simple 2 button control
- Automatic Safety Locking
- Perfect for lifting large machinery

ENERPAC



HYDRAULIC TORQUE TOOLS

Enerpac's comprehensive range of mechanical and hydraulic torque tools provides precise & effective force to make your work more productive, safer, and easier to perform. From joint assembly, controlled tightening, torque wrench pumps to joint separation, Enerpac torque equipment, tools & accessories (including hydraulic torque wrenches) offer the solution best-suited to the project, available from one source.

THESE TORQUE TOOLS INCLUDE:

- Square drive torque wrenches
- Cassette torque wrenches
- Torque wrench pumps
- Pneumatic torque wrenches
- Flange alignment tools
- Flange spreaders
- Nutsplitters
- Hoses & accessories

Torque tools we supply, calibrate and service

For more torque tool information see www.enerpac.com/en-au



SQUARE DRIVE
TORQUE
WRENCHES



CASSETTE
DRIVE TORQUE
WRENCHES



FLANGE
ALIGNMENT TOOLS



FLANGE SPREADER

BOLT TENSIONING

Technofast Industries has been providing innovative and economical hydraulic bolt tensioning solutions to industries around the world from its Australian base for over 20 years.

Hydraulic Bolt tensioners are Technofast's speciality – we would encourage you to view our exclusive EZIJAC range of bolt tensioners. Technofast Industries have a vast Product range to meet all requirements when it comes to bolt tensioning. Technofast's exclusive bolt tensioners are a preferred tool within the International market coming in both manual, spring return, modular and dedicated models.

HYDRAULIC BOLT TENSIONER SYSTEMS

- B2 EzJac Dedicated Size
- B3 EzJac Spring Return/Modular CamNut
- A4 EzJac Subsea
- A4 EzJac Reaction Nuts
- X2/Y2 2 Stage EzJac

BOLT TENSIONER

- EziTite Hydraulic Nuts
- Standard Stroke or Long Stroke
- Ultra High Pressure
- High Temperature Resistant

OTHER PRODUCTS

- EziTite Hydraulic Bolts
- EziTite Bearing Setter
- FastaJac Bolt Tensioner





PNEUMATIC TORQUE TOOLS

PNEUMATIC, BATTERY POWERED AND ELECTRONIC PISTOL TORQUE TOOLS GRIP WRENCHES



- Reliable and dependable torque tools for the installation and removal of heavy duty fasteners in a variety of industries that require accuracy, power and safety.
- Equal power in both forward and reverse allows more flexibility for tough maintenance jobs
- Individually calibrated and traceable to NATA Standards
- Accuracy of +/-5% and repeatability of 2%
- 88 times less vibration than impact wrenches
- Exclusive low profile reaction arm takes operational load off the operator, reducing injuries and operation costs





PROCESS CONTROL



WINNELLIEHYDRAULICS
THE *TECHNICAL SUPPLY* SPECIALISTS

GAUGES, CLAMPS & ACCESORIES



GAUGES

- Suitable for hydraulic oil and gaseous media that do not attack any copper base alloy (Please consult our office before you use SPG with other media)
- Available in nominal sizes 63 and 100
- Standard thread form: BSP
- Housing made out of stainless steel (1.4301)
- Sight glass made out of acrylic
- Glycerine filled
- Standard dual scales with pressure indication in bar and PSI
- U-bolt or flange mounting kit on request



CLAMPS

STAUFF Clamps enable quick and easy pipe and hose installations as well as a clean distinct pipe layout and vibration and noise reducing properties.

Applications are almost unlimited. Custom sizing and configurations are available upon request. Wide product range, all areas of pipe, tube, and hose installation are covered:

- Industrial hydraulics
- Mobile hydraulics
- Marine hydraulics
- Offshore
- General industrial pipe construction
- Mining industry
- Nuclear reactor construction
- Instrumentation and control technology
- Pneumatics



TEST EQUIPMENT

STAUFF Test offers a comprehensive range of test points and accessories for hydraulic and pneumatic systems.

Varied spectrum of screw-in test points and test couplings for tube fittings, which are oriented to international standards, guaranteed to comply with the requirements of applications all over the world.

Extensive range of accessories, including measuring hoses and pressure gauges (mechanical and digital/electronic).



BALL VALVES

STAUFF Ball valves are available in a variety of configurations and a range of sizes to suit most Industrial applications including mobile, mining and marine hydraulics.

Specially configured valves are also available for specialised applications including for Gas, Paint and lacquer and Foam.



MAXSEAL SOLENOID VALVES

Proven in the field for over 50 years, the IMI Maxseal brand offers extremely high quality stainless steel solenoid valves designed and manufactured with reliability and integrity in mind.

IMI Maxseal valves perform exceptionally well in harsh environments all over the globe and are often associated with offshore oil & gas applications, but are also used onshore, particularly in coastal environments where a fully stainless steel construction is advantageous.

For more information please contact our dedicated team.

NORGREN PRECISION LINE

From offshore oil and gas platforms to refineries and chemical plants, you'll find our precision components at the heart of the energy and chemical industry's most marvellous machines – with market leading fluid control products tackling the most extreme operating conditions and engineering challenges on the planet.

At the heart of our offering are stainless steel solenoid valves, air preparation equipment, pneumatic and hydraulic pressure switches, I/P and E/P convertors, 2/2 and 3/2 process valves and redundant valve manifold systems (RVM).

Find out how our product offering covers a wide range of applications including onshore and offshore extraction and distribution.



WE ALSO SUPPLY **FESTO** 

INSTRUMENTATION

Our manifolds, fittings and valves offer superior performance with a comprehensive range of remote and direct mount instrumentation manifolds to suit all types of instrumentation installations, specifications and applications.

AS THE PARKER PREMIER DISTRIBUTOR
FOR NORTHERN TERRITORY
WE STOCK AND SUPPLY:

- Fittings/Quick Couplings
- Ball/Plug Valves
- Check Valves
- Filters
- Relief Valves
- Bleed and Purge Valves
- Metering Valves
- Needle Valves
- Manifold Valves
- Diaphragm Valves
- Regulators
- Pressure Regulators
- Back Pressure Regulators
- Flowmeters/Flow Controllers
- Pressure Safety Valves
- Pressure Relief Valves





MEASURING TOOLS

Macnaught is an Australian owned company, established in 1948, and has been manufacturing Oval Gear Row Meters since the early 1990's servicing in Australasia.

With over 580 models, Macnaught offers a comprehensive range of Oval Gear Flow Meters optimised to suit a broad spectrum of industrial applications, predominately within the Fuel and Oil industry.

The combination of simple design, robust construction, highly accurate performance and the backing of an exceptional support network, ensures that Macnaught is globally recognised as an industry leader in the supply of fluid management solutions.

WHY CHOOSE US?

- 24 Hour lead time-MX series
- M-Lock system
- Manufactured from billet
- Excellent customer support
- Made in Australia

APPLICATION EXAMPLES

- Service and Fuelling trucks
- Fuel Depots
- Portable Fuelling Systems
- Bio-Diesel Blending and Production
- Lubrication Blending and Dispensing
- Hydraulic Fluid Dispensing and Test Stands
- Boiler and Generator Fuel Consumption
- Fuel Consumption for Mining Construction and Military Vehicles



VALVES & ACTUATION



WINNELLIEHYDRAULICS
THE *TECHNICAL SUPPLY* SPECIALISTS

VALVES

BALL VALVES

- API 6A trunnion mounted and floating ball
- Flanged, screwed, socket and butt weld end connections
- Side and top entry designs
- Severe service, cryogenic and hazardous applications

GATE, GLOBE & CHECK VALVES

- API 600 API 602 designs
- Bellows sealed and cryogenic applications
- Wafer, dual plate and axial flow check valves

API 6A OFFSHORE HIGH-PRESSURE VALVES

- Topside and subsea applications
- Through conduit and expanding gate valves
- Top entry ball and swing check valves
- Modular DBB and instrument valves

DOUBLE BLOCK & BLEED VALVES

- Largest range of DBB ball, plug and instrument valves
- All materials, all sizes, all pressures

BUTTERFLY VALVES

- Rubber or Teflon lined
- Double or triple offset designs
- On/Off or control applications
- Cryogenic and firesafe designs

CONTROL VALVES

- Globe, ball and butterfly valve designs
- High pressure drop, severe service or low flow applications
- Choke valves

OTHER PRODUCTS

- Sampling valves
- Chemical injection
- Line/spectacle blind systems
- Strainers - Y, T, basket and temporary
- Plug valves - lubricated, non-lubricated and DBB
- Pig launchers and receivers
- Level gauges



LEADING VALVE BRANDS

DOUGLAS CHERO SpA
dc
FORGED VALVES

olivervalves

rotork®

HLC High Level confidence

PV PETROLVALVES



BEL VALVES

SRI



OSV

PKvalve
피케이밸브 | 주



GALPERTI
GROUP
The Original

no bloc **DAFRAM** S.p.A.
VALVOLE A SFERA - BALL VALVES

OMB®

STAR LINE®

SAGCAP

Coyard

ABACUS
WAFFER CHECK VALVES

DARCO

VALVES SELECTION GUIDE

	SIZES				PRESSURE CLASS								MATERIALS								
	¼" - 2"	2" - 4"	4" - 24"	> 24"	150#	300#	600#	800#	900#	1500# / 1690#	2500# / 2680#	4500#	750/1500/2000 **	3000/6000**	Carbon Steel	Stainless Steel	Chrome	Exotic Alloy	Bronze	Double Iron	Cast Iron
API 600 Cast Steel	●	●	●	●	●	●	●	●	●	●	●	●	●	●	●	●	●	●	●	●	●
API 602 Forged	●	●	●	●	●	●	●	●	●	●	●	●	●	●	●	●	●	●	●	●	●
API 603	●	●	●	●	●	●	●	●	●	●	●	●	●	●	●	●	●	●	●	●	●
Pressure Seal	●	●	●	●	●	●	●	●	●	●	●	●	●	●	●	●	●	●	●	●	●
Y-Pattern	●	●	●	●	●	●	●	●	●	●	●	●	●	●	●	●	●	●	●	●	●
Bronze and Iron	●	●	●	●	●	●	●	●	●	●	●	●	●	●	●	●	●	●	●	●	●
Wafer Check/Dual Plate	●	●	●	●	●	●	●	●	●	●	●	●	●	●	●	●	●	●	●	●	●
Swing Check API 6D	●	●	●	●	●	●	●	●	●	●	●	●	●	●	●	●	●	●	●	●	●
Pipeline Piston Check	●	●	●	●	●	●	●	●	●	●	●	●	●	●	●	●	●	●	●	●	●
Bellowseal	●	●	●	●	●	●	●	●	●	●	●	●	●	●	●	●	●	●	●	●	●
Plug Lubricated	●	●	●	●	●	●	●	●	●	●	●	●	●	●	●	●	●	●	●	●	●
Plug Non-lubricated	●	●	●	●	●	●	●	●	●	●	●	●	●	●	●	●	●	●	●	●	●
HF Acid	●	●	●	●	●	●	●	●	●	●	●	●	●	●	●	●	●	●	●	●	●
Plastic Lined	●	●	●	●	●	●	●	●	●	●	●	●	●	●	●	●	●	●	●	●	●
Butterfly-Resilient Seated	●	●	●	●	●	●	●	●	●	●	●	●	●	●	●	●	●	●	●	●	●
Butterfly-High Performance	●	●	●	●	●	●	●	●	●	●	●	●	●	●	●	●	●	●	●	●	●
Butterfly-Triple Offset	●	●	●	●	●	●	●	●	●	●	●	●	●	●	●	●	●	●	●	●	●
Ball Valve-THD & SW	●	●	●	●	●	●	●	●	●	●	●	●	●	●	●	●	●	●	●	●	●
Ball Valve-Flanged Flotating	●	●	●	●	●	●	●	●	●	●	●	●	●	●	●	●	●	●	●	●	●
Ball Valve-API 6D Trunnion	●	●	●	●	●	●	●	●	●	●	●	●	●	●	●	●	●	●	●	●	●
Ball Valve-Top Entry	●	●	●	●	●	●	●	●	●	●	●	●	●	●	●	●	●	●	●	●	●
Ball Valve-Metal Seated	●	●	●	●	●	●	●	●	●	●	●	●	●	●	●	●	●	●	●	●	●
Ball Valve-Lined	●	●	●	●	●	●	●	●	●	●	●	●	●	●	●	●	●	●	●	●	●
Ball Valve-VPort	●	●	●	●	●	●	●	●	●	●	●	●	●	●	●	●	●	●	●	●	●
Needle Valve	●	●	●	●	●	●	●	●	●	●	●	●	●	●	●	●	●	●	●	●	●
Cryogenic	●	●	●	●	●	●	●	●	●	●	●	●	●	●	●	●	●	●	●	●	●
Doble block & Bleed valves	●	●	●	●	●	●	●	●	●	●	●	●	●	●	●	●	●	●	●	●	●

ACTUATORS

rotork®

WESTLOCK
CONTROLS CORPORATION

Limitorque
FLOWSERVE

SARASIN
ACTOR

Bifold®

rotork®
Midland

PNEUMATIC & ELECTRIC ACTUATION

Rotork is the market leading actuator manufacturer and flow control company that operates in any market where the flow of gases or liquids needs to be controlled including virtually all upstream and downstream activities ranging from offshore production facilities through refining and processing to transportation of finished products via pipelines or vessels.

SOLUTIONS WE OFFER ARE:

- Electric Actuators
- Fluid Power Actuators
- Process Control Actuators
- Gearbox and Mounting Kits
- Instrumentation & Control
- Pneumatic Valves & Manifolds

BRANDS WE SUPPORT ARE:

- Rotork
- Bifold
- Midland
- M & M



rotork[®]
Midland

Bifold[®]





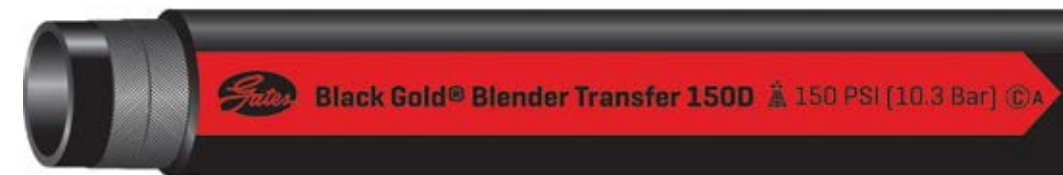
GATES POWER TRANSMISSION

Tough industrial applications call for even tougher synchronous belts. Designed with varying tooth profiles to accommodate a variety of applications, find Poly Chain, rubber synchronous belts, and automotive EPAS when high-power transmission is desired. Leaner, meaner, and cleaner. No oil. No stretch. That's how Gates Synchronous Belts power progress.



INDUSTRIAL HOSE

- Air/Water Hose
- Bunkering Hose
- LNG/Cryogenic Hose
- Offtake Loading Hose
- Process Chemical Hose
- General Hydraulic Hose
- Blow Out Preventer Hose
- Ultra High Pressure Hose





FILTRATION



WINNELLIEHYDRAULICS
THE TECHNICAL SUPPLY SPECIALISTS

OIL FILTRATION

Winnellie Hydraulics offers a range of low, medium, and high pressure filters, portable filtration systems, filter indicators and reservoir equipment for hydraulic and lube oil applications. Our comprehensive condition monitoring solutions include fluid contamination monitors, flowmeters, transducers, and transmitters for various mobile and industrial hydraulic and lube oil application. This complete range of products makes our solutions a total system health management, which includes a diagnostic, therapeutic, and preventative approach.

THE RANGE INCLUDES:

- Pressure elements
- Return elements
- Air/Oil separators
- Intake filters
- Water removal elements
- Lube elements

All products are manufactured in full accordance with ISO9001-2008 as is the industry standard with a wide range of stock held in Australia to ensure lead times are minimised as much as possible





DIESEL FILTRATION

At Winnellie Hydraulics, we're guided by a relentless drive to help our customers become more productive and achieve higher levels of profitability by engineering the best systems for their requirements. It means looking at customer applications from many angles to find new ways to create value. Whatever the motion and control technology need, Winnellie Hydraulics has the experience, breadth of product and global research to consistently deliver across Australasia.

No company knows more about motion and control technology than Winnellie Hydraulics.

THE INDUSTRIES OUR FILTERS SERVES ARE:

- Automotive
- Marine
- Earthmoving
- Mining
- Oil and Gas



GAS FILTRATION

Peco Facet Gas Filters is equipment designed to treat the gas coming from gas wells and also the sour gas in the treatment plants aimed for the removal of solid contaminants and slug liquids.

Peco Facet Gas Filters are simple and easy to maintain, normally supplied as skids with all the instrumentation needed for the perfect control and maintenance for the unit.

They cover a wide range of compatibilities and offer solids retention capabilities from 0.3 up to 750 micron, with efficiencies from above 99.5% to 100%. Flow rates up 300,000 scfm.

Built to AS code, Section VIII construction, stamped and certified or CE marked, constructed of carbon steel or stainless steel.





FILTERS, STRAINERS & MEMBRANES

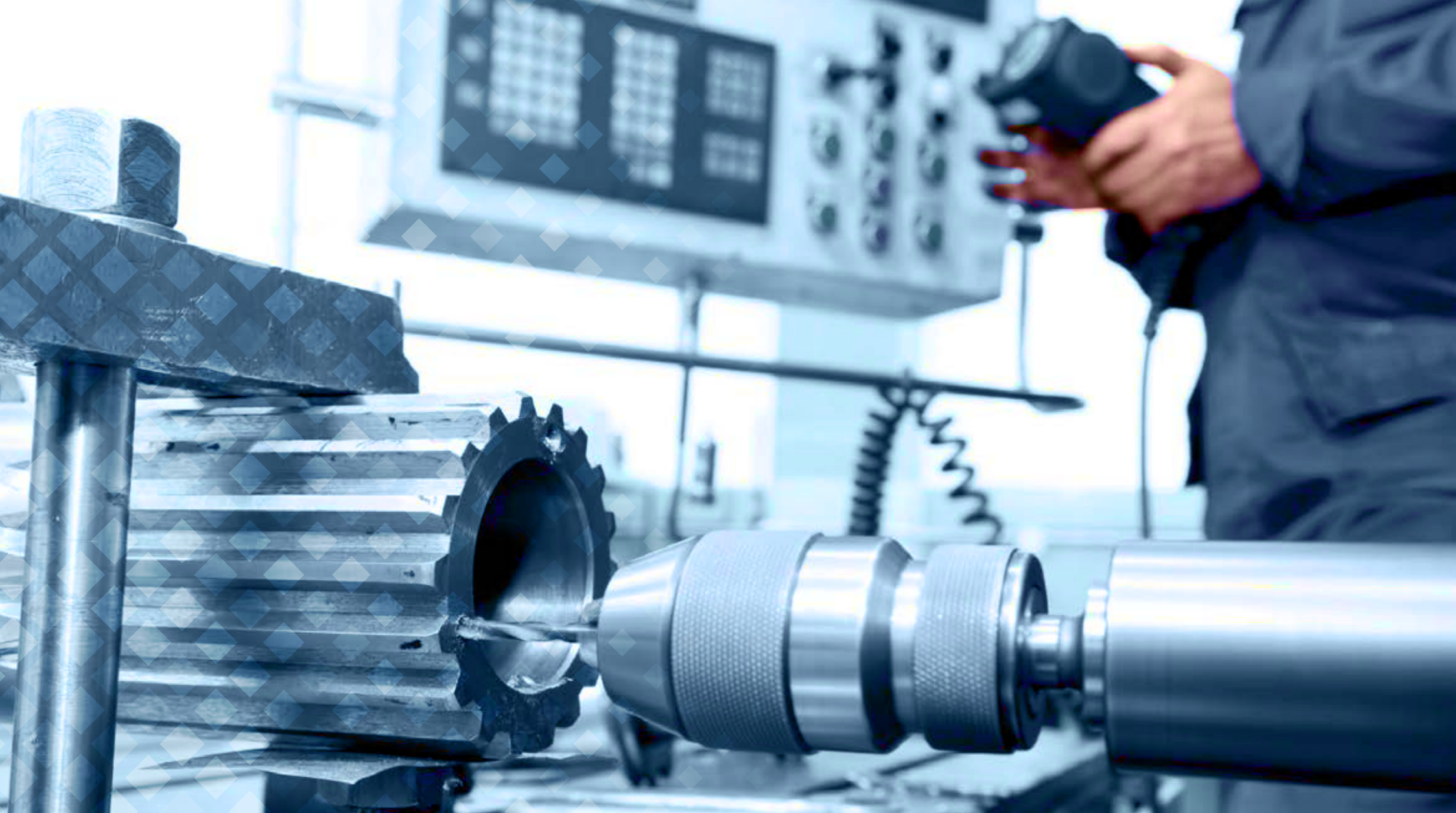
We offer supply and engineering support for a complete suite of filtration products for a wide range of onshore & offshore applications. The manufacturers we represent have established a reputation for quality and performance which is reflected in their approved supplier status with many of the world's top tier operators.

THESE INCLUDE:

Parker

EATON





HYDRAULICS



WINNELLIEHYDRAULICS
THE *TECHNICAL SUPPLY* SPECIALISTS

HYDRAULIC COMPONENTS

As the specialist in hydraulics components we offer a broad range of solutions ensuring down time, productivity and cost reduction are at the forefront of our offering. With an extensive network of trusted hydraulic suppliers we offer application specific expertise to produce specialised solutions in complex environments. With over 30 years experience in the mining and oil & gas industry Winnellie Hydraulics have you covered.

As the distributors for Parker & Rexroth we offer a range of hydraulic solutions including:

CYLINDERS

- Enerpac Cylinders - High pressure
- Agriculture Cylinders - Low pressure
- Filter Press Cylinders
- Double and Single Acting Cylinders

DIRECTIONAL VALVES

- Check Valves
- Flow Control Valves
- Servo Valves
- CETOP 3, 5, 7 * Valves

MOTORS & PUMPS FIXED DISPLACEMENT

- Gear
- Vane
- Gerotor
- Axial Piston
- Radial Piston

MOTORS & PUMPS VARIABLE DISPLACEMENT

- Axial Piston
- Radial Piston
- Power Units





NITROGEN ACCUMULATORS

Accumulators provide a means of regulating the performance of a hydraulic system. They are suitable for storing energy under pressure, absorbing hydraulic shock, dampening pump pulsation and flow fluctuations.

Bladder or diaphragm accumulators provide excellent gas and fluid separation ensuring dependable performance, maximum efficiency, and long service life.

Save money using an accumulator by:

Eliminating the need for large hydraulic pumps and electric motors. An accumulator in the system ensures the correct volume of oil at the correct working pressure, even in emergency situations and compensates for variations in leakage and temperature, dampens pressure and flow pulsations, maintains system pressure when the hydraulic pump is switched off and provides hydraulic suspension.

As the oldest manufacturer of hydraulic accumulators, OLAER provides a full range of bladder accumulators, membrane accumulators and piston accumulators. They can be used in a wide range of applications such as energy storage, pulsation dampening or surge alleviation. The OLAER group of accumulators has a very strong presence in highly demanding industries, such as Oil & Gas, Mining and Defence.





MATERIAL TRANSFER



WINNELLIEHYDRAULICS
THE TECHNICAL SUPPLY SPECIALISTS

LUBRICATION EQUIPMENT

MATERIAL DISPENSING AND LUBRICATION SYSTEMS

Graco products move, measure, control, dispense and apply a wide range of fluids and viscous materials used in vehicle lubrication, commercial and industrial settings.

HUSKY DIAPHRAGM PUMPS

- 20% increase in fluid flow compared to previous Husky models in the range
- Up to 5 times longer diaphragm life compared to other diaphragm pumps in its class
- Expanded material offering to handle endless applications from Australasia

FIRE-BALL® AIR OPERATED PISTON PUMPS

- The industry standard in lubrication equipment for ourstanding performance and reliability
- Designed for applications requiring continuous duty operation
- Available in ratios of: 3:1, 6:1, 10:1, 50:1, 75:1

XD SERIES HOSE REEL

High performance hose reels designed for heavy duty jobs that require high frequency use, extra strength and durability.

- Dual pedestal frame
- Metal spool
- Rugged indoor and outdoor use
- Narrow footprint
- Sealed springs
- In-field spring adjustment
- Non-sparking ratchet
- Sealed roller bearings





The Right Connection[®]

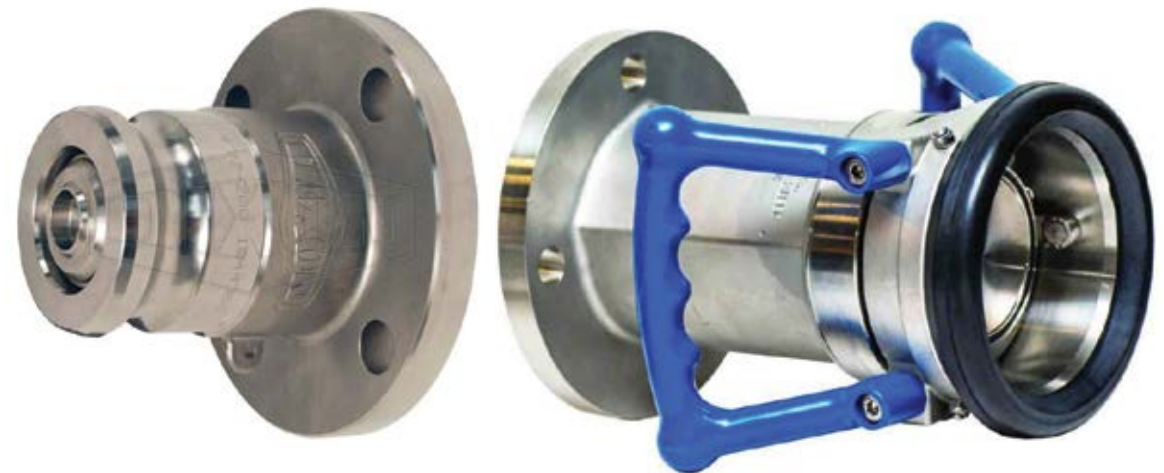


RIG APPROVED HOSE & FITTING

Dixon's rig-safe range of hose and fittings offers NATA and DNV approval ensuring quality is never compromised. All components are factory tested in accordance with AS, designed for extreme conditions.

THE DIXON RANGE INCLUDES (BUT NOT LIMITED TO):

- Rigboss Series Hose
- Ball/Plug Valves
- Drill water
- Potable water
- Dry Disconnect No-Spill Fittings
- Dry Disconnect No-spill Flanges
- Vent-Lock Camlocks
- Minsup Fittings
- Hammer Unions





WINNELLIEHYDRAULICS
THE *TECHNICAL* SUPPLY SPECIALISTS

INDUSTRIAL HOSE

Winnellie Hydraulics is a specialist designer, manufacturer and supplier of hose restraints and cable stockings servicing both in Australasia.

- Hose restraints are used to restrict hose whip on high-pressure hoses if the hose connection coupling or the hose fails.
- Cable stocking (also known as cable grips or cable socks) are an effective means of handling cable that needs to be pulled, attached or secured.
- With our expertise and experience, gained from involvement in the mining industry, we can assist you to select the best product for your needs.

Most of our product offering is custom made hand woven to strict quality standards to meet your individual requirements and specifications. The exception to this are our two-eye hose restraints which come in a range of standard sizes





KSB CENTRIFUGAL PUMP

KSB Aktiengesellschaft has been manufacturing centrifugal pumps for more than 110 years. Their product range has been extended continuously. Today, almost all of KSB's pumps are based on the principle of the centrifugal pump. The KSB Group exceeds the energy saving objectives of future EU regulations, which translates into large savings for Winnellie Hydraulics customers.

CENTRIFUGAL PUMP TYPES

The following pump types are also referred to as centrifugal pumps:

- Radial flow pumps
- Diagonal flow pumps (also called semi-axial flow pumps)
- Side channel pumps
- Peripheral impeller pumps
- Axial flow pumps (also called propeller pumps)



FLANGES, GASKETS & BOLTS



FLANGES

We offer Carbon Steel, 316 Stainless Steel, Duplex, Super Duplex and 6MO flanges, flange blinds and more for onshore & offshore applications from a wide range of OEM's across Singapore, UK, USA, Korea and locally in Australia.



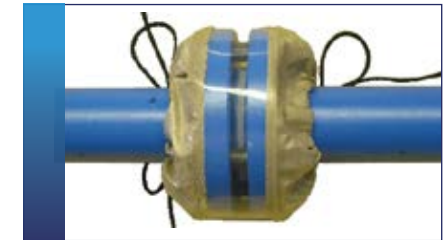
GASKETS

We offer Paper, Metallic, PTFE, Spiral Wound, Soft seal gaskets and more for onshore & offshore applications from a wide range of OEMs.



STUD BOLTS

We offer Stainless Steel, Hot Dip Galvanised, Mild Steel stud bolts for onshore & offshore applications from a wide range of OEM's across Singapore, UK, USA, Korea and locally in Australia.



FLANGE COVERS

FEATURES

- Easy installation to valves and flanges
- Controls leaks and sprays in chemical pipelines
- Early warning visible indication of leakage through colour change
- Exclusive contour shape
- UV and water resistant
- High temperature fabric



- Grayloc Clamp Connectors
- Grayloc Compact Flanges
- Grayloc Closure Systems
- Nozzle Check Valves
- Universal Ball Joints



WINNELLIEHYDRAULICS
THE *TECHNICAL SUPPLY* SPECIALISTS



Cassette Wrenches

A/F Size	Max Torque	Model Number	Daily Hire Rate
	2766Nm	W2000PX DRIVE UNIT	\$54.00
35MM 1 3/8"	2766Nm	W2106X CASSETTE	\$49.00
36MM 1 7/16"	2766Nm	W2107X CASSETTE	\$49.00
41MM 1 5/8"	2766Nm	W2110X CASSETTE	\$49.00
46MM 1 13/16"	2766Nm	W2113X CASSETTE	\$49.00
55MM 2 3/16"	2766Nm	W2203X CASSETTE	\$49.00
	5661Nm	W4000PX DRIVE UNIT	\$65.00
50MM 2"	5661Nm	W4200X CASSETTE	\$55.00
60MM 2 3/8"	5661Nm	W4206X CASSETTE	\$55.00
63MM 2 1/2"	5661Nm	W4208X CASSETTE	\$55.00
65MM 2 9/16"	5661Nm	W4209X CASSETTE	\$55.00
70MM 2 3/4"	5661Nm	W4212X CASSETTE	\$55.00
75MM 2 15/16"	5661Nm	W4215X CASSETTE	\$55.00
		W8000PX DRIVE UNIT	\$75.00
85MM	11484Nm	W8085MX	\$65.00



Square Drive Wrenches

Model Number	Drive Size	Max Torque	Daily Hire Rate
S1500	3/4" DRIVE	1952Nm	\$85.00
S3000	1" DRIVE	4373Nm	\$130.00
S6000	1 1/2" DRIVE	8338Nm	\$195.00



Torque Pumps

Model Number	Power Source	Daily Rate
ZA4208TX	AIR	\$95.00
TQ700E	ELECTRIC	\$95.00
ZU4208TX-Q	ELECTRIC	\$95.00
*Includes Twin Hose Set		

HIRE CAPABILITY

Hydraulic Torque Wrench Systems

BEST HIRE RATES, LARGEST RANGE!



Available for immediate mobilisation for shutdown and maintenance campaigns



Flange Alignment Tools

Maximum Lifting Force (ton)	Model Number	Minimum bolt Size (mm)	Flange Wall Thickness	Weight (kg)
1	ATM-2	16	14-82	1.6
4	ATM-4	24	30-133	8.6
9	ATM-9	31.5	93-228	4.5



Flange Spreaders

Max Spreading Force (ton)	Model Number	Tip Clearance (in)	Max Spread (in)	Type	Weight (kg)
8	FSM-8	.24	3.16	Mechanical	6.5
14	F5H-14	.24	3.16	Hydraulic	7.1



Nutsplitters

Bolt Range (mm)	Hexagon Nut Range (mm)	Capacity (ton)	Model Number
M6 - M12	10 - 19	5	NC-1319
M12 - M16	19 - 24	10	NC-1924
M16 - M22	24 - 32	15	NC-2432
M22 - M27	32 - 41	20	NC-3241
M27 - M33	41 - 50	35	NC-4150
M33 - M39	50 - 60	50	NC-5060
M39 - M48	60 - 75	90	NC-6075



Jacks & Pumps

All sizes and types

HIRE CAPABILITY

Hydraulic Torque Wrench Systems

BEST HIRE RATES, LARGEST RANGE!

Hire Capability Checklist

- ✓ Available for same day pick up
- ✓ NATA certification as standard
- ✓ Industry leading Enerpac quality
- ✓ Technical support available 24/7
- ✓ Free of charge travel to NT, WA, SA, NSW, QLD & VIC

Also Available



Bolt Tensioners



Flange Facing Tools



NorBars

URGENT SUPPLY NEEDS?



**GLOBALY
CONNECTED**

PUT OUR EXPERTISE TO WORK FOR YOU

sales@winnelliehydraulics.com

- Valve & Actuation Suppliers
- Hydraulics Suppliers
- - - ● Instrumentation



WINNELLIEHYDRAULICS
THE *TECHNICAL SUPPLY* SPECIALISTS

—
+61 8984 4939
www.winnelliehydraulics.com

