

THE WINNELLIE GROUP

TECHNICAL SPECIALISTS

Capability Statement



THE WINNELLIE GROUP

TECHNICAL SPECIALISTS

The Winnellie group of companies is a leading supplier of equipment and services to oil & gas, mining, marine, defence and general industry.

We are proud to support industry throughout Australia, providing experience and technical expertise across a wide range of disciplines.



Our clients



Our History

Founded as Winnellie Hydraulics in 1983 by Richard & Carol Nicholson, we focussed on local earth moving, transport and commercial fishing. Today, we've grown to service clients across Australia and the Asia Pacific



Max Nicholson, CEO



OUR EXPERIENCE is your advantage

Working across Australia Winnellie group of companies provides technical expertise across the following disciplines.

Winnellie Hydraulics & Waltan Tools

- Supply of hydraulic and pneumatic components
- Supply of hydraulic and pneumatic tooling
- Rental of flange management tooling
- Overhaul and repair capability from our purpose-built facility
- On-site capability including offshore facilities
- Hydraulic and industrial hose manufacture and testing
- Machining, welding and light fabrication as required
- Cost plus third party procurement services
- Full range of NATA-traceable calibration and testing requirements
- Full stockholding of critical spares in support of valued clients
- Torque Tools and Equipment
- Construction Tools and Equipment
- Pipe Tools and Equipment
- Cordless and Assembly Tools
- Accessories & Specialty Tooling

Winnellie Valve & Process

- Valve supply across a wide range of industry recognised brands
- Process pumps, including API 610 and double-diaphragm pumps
- Process gas/steam filters, coalescers, and strainers
- Process skid packages and steam equipment
- Floating hose assemblies
- Process skid packages
- Process steam equipment

Quality Assurance

We are a proudly ISO accredited company operating under the current,
ISO 14001 – Environmental Management Systems
ISO 45001 – Occupational Health & Safety
ISO 9001 – Quality Management



Founded 1983
100% Australian owned



16
Technical specialists
around Australia



24/7 on-call
providing experienced &
knowledgeable support



6
Fully trade qualified
technicians



150+ years
of experience &
industry knowledge



3
Awards recognising
our performance



\$35,000+
in community
donations



15
Countries we currently
supply equipment from



The HIRE EXPERTS



Winnellie Hydraulics is renowned Australia-wide as the 'go to' hydraulics supply and hire specialists, servicing customers all over Australia. With our beefed up hire fleet we now have the largest arsenal in the business, ready to service all your workshop and on-site needs with the options for:

Bolting Tools

- Cassette Wrenches
- Square Drive Wrenches
- Bolt Tensioners
- Nut Splitters
- Flange Alignment Tools
- Flange Spreaders

Lifting Tools

- Hydraulic Jacks
- 2 way / 4 way manifolds
- Air, Electric and Manual Pumps
- Gauges, Control Valves,
- 2, 3, 4 & 8m Hoses



Regardless of your location, accessibility or power source, we have a solution for your problem!



Cassette Wrenches



Square Drive Wrenches



Flange Alignment Tools



Flange Spreaders

Our **SERVICES**



Authorised Enerpac Service & Maintenance Centre

As an Enerpac Authorised Service Centre we provide top quality maintenance and repair services for all Enerpac products. This allows us to not only supply and hire this equipment but also diagnose, repair, maintain, calibrate and certify this equipment. The Enerpac range includes hydraulic cylinders, pumps, torque tools and many more industrial tools.

THE **WINNELLIE** GROUP
TECHNICAL SPECIALISTS

Workshop Capabilities

100m² of floor space that includes:

- 2m lathe /300mm steadyside, 105mm dia spindle
- Turret mill 700x1500x700mm & 50 T H frame press
- MIG/TIG/STICK Welding 32A/415V & 15A/240V
- Large cylinder strip down, honing and test bench
- 40kw aviation-standard test bench
- Torque tooling calibration & 40k psi pressure testing

Service Capabilities

- Process pumps, repair & service
- Oil Polishing services
- Accumulator, service and repair
- Hydraulics, tool service
- Hydraulics, tool calibration

Implementation Capabilities

- On-Site - Hydraulic torque and tension
- On-Site - Hydraulic and manual flange management
- On-Site - Hydraulic lift and shift
- Services - flange management calculations
- Services - Site tool commissioning and handover
- Services - Maintenance, servicing and calibration
- Services - Tool/asset register & maintenance program



TRAINING Building Expertise that Lasts



Hydraulic Training

Winnellie training programs are targeted at operators and maintenance staff, in the use and maintenance of high-pressure hydraulic tools. Correct use of these tools increases safety and reduces risk – both for the operator and for the environment in which the tools are used. Having the right training enables the operator to use the tools safely and properly.

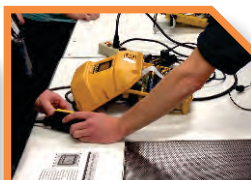
- Safety focus for operators, tools and environment
- Standard courses and specialised training available
- Highly experienced trainers

Valve and Process Training

We also offer a range of Valve and Process courses written by our business manager Iain Garvin who has over 30 years' experience in the valve and steam industry. Targeted towards anyone that is keen to learn more about valves and associated equipment from trades to senior engineers. The flexible course content can be tailored to suit the audience experience level and time available. Course sessions can be as short as a 1-hour Lunch & Learn to a 1 or 2 day intensive.



Hydraulics Training Level 1



Hydraulics Training Level 2



Valve Training Level 1



Valve Training Level 2

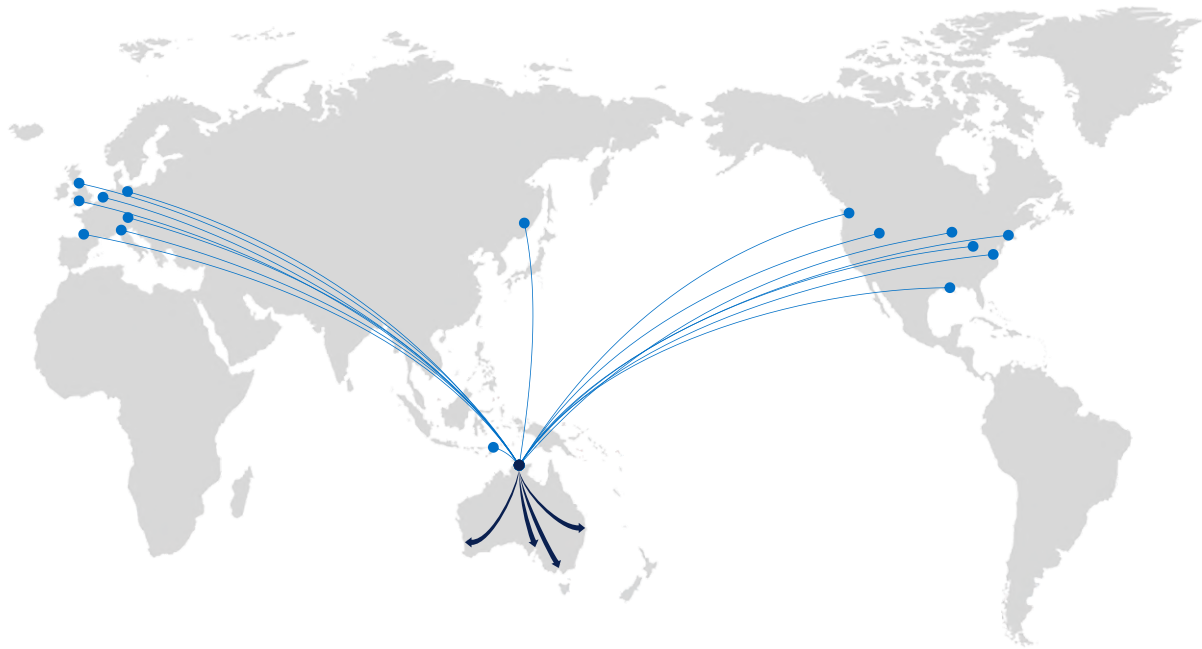


Valve Training Severe Service

| OIL & GAS | MINING | LNG | PIPELINES | MARINE | DEFENCE |

GLOBAL PROCUREMENT

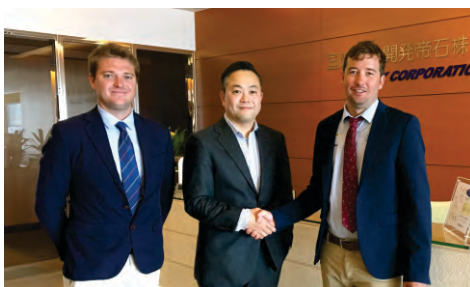
A locally invested supplier of equipment and services to oil & gas, mining, marine, defence and general industry.



Our team specialises in global procurement and has strong relationships with 100s of quality original equipment manufacturers around the world including France, Italy, UK, Korea, USA and many more. Our ability to work directly with the overseas factories gives our valued customers piece of mind that we will work day

and night to provide the best technical support and pricing, but most importantly take ownership of the supply chain challenges faced by our time critical industry. Whether its specialist tooling, valves, pumps or anything in between, with over 40 years' experience you can rely on Winnellie Group as your technical supply specialists.

Our Products



Cameron McEwin (L), Toshihide Mizuguchi (C), Max Nicholson (R) **INPEX Head Office, Japan**



Iain Garvin **PK Valve, South Korea**



Iain Garvin visits **Oliver Valves, Head Office, Cheshire, UK**



Part of the WINNELLIE Group

Valve solutions

- Actuation
- Angle Slurry Valves
- Ball Valves
- Bellows Sealed Valves
- Bleed Valves
- Bottom Tank Valves
- Butterfly Valves
- Check Valves
- Choke Valves
- Control Valves
- Cryogenic Valves
- Custody metering station
- Diaphragm Valves
- Double Block and Bleed Valves
- Dual Expanding Plug Valves
- Gate Valves
- Globe Valves
- HIPPS System
- Indirect Heaters
- Instrument Valves
- Knife Gate Valves
- Level Gauges
- Lift Plug Valves
- Line Blinds
- Manifold Valves
- Mono Flange Valves
- Natural gas reducing and metering station
- Needle & Gauge Valves
- Pinch Valves
- Plug Valves
- Process Packages
- Pumps
- Rising Stem Ball Valves
- Sampling Valves
- Separators & Coalescers
- Severe Service Valves
- Solenoid Valves
- Steam Traps
- Strainers & Filters
- Subsea Valves

From Trusted Valve & Process Supply Chain Partners:

olivervalves

DARCO

PKvalve

arflu

WOODSUNG VALVE CO., LTD.

Insert Deal srl

CECO
ENVIRONMENTAL

VALVITALIA
GROUP

INDUSTRIE
VALVO
S.p.A.

ORION
Valves

Mariani
- fluid control -

DOLANS CHERO SpA
dc

SchuFI

ABACUS
Abacus Valves International Ltd

MIDLAND-ACS
A rotam® Brand

DAFRAM
VALVOLI E SISTEMI AUTOMATICI

BEL VALVES

FINDER
POMPE

AMPO
POYAM VALVES
Commitment made of steel

CDB
ENGINEERING

ITT
Engineered Valves

SACCAP

Bifold

VALSTEAM
valsteam.com
ADCA

IEA

SMC

BURACCO

Perar

IMI MAXSEAL

KVC UK Ltd
Federal International (5000) Ltd

STOPSON
italiana

Parker

MERWEDE
VALVES

Bifold **Marshalsea**

ASTAVA
INSTRUMENTATION SOLUTIONS

| **OIL & GAS** | **MINING** | **LNG** | **PIPELINES** | **MARINE** | **DEFENCE** |

The Winnellie Group Technical Specialists

Power Generation



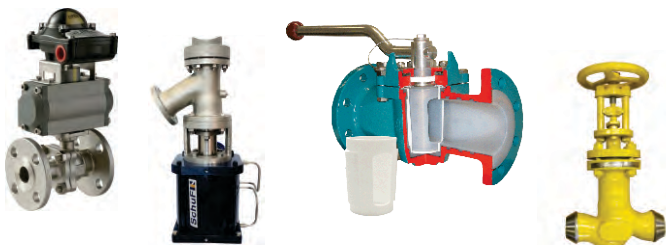
High pressures and high temperatures are a potentially lethal combination. That's why, when it comes to valves, nothing but the best will do. Winnellie Valve & Process only work with manufacturers who have many years experience in building valves for the power generation industry.

Subsea Oil & Gas



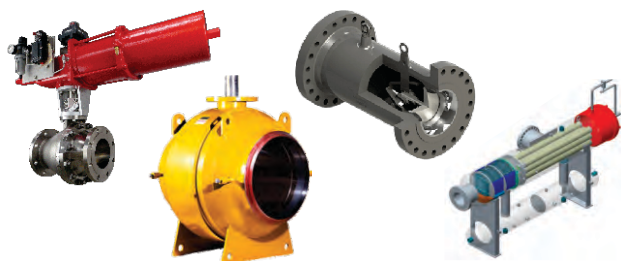
Due to the critical nature of the application and our responsibility to care for our environment, premature failure of subsea valves is not an option. That's why when only the best will do Winnellie Valve and Process have the ideal solution to suit your application.

Chemical Processing



Valve applications in the chemical processing industry are wide and varied, hence correct valve selection is critical to ensure long life and maximum productivity. Winnellie Valve & Process experience ensures you comply with industry standards and can offer customisation to suit your specific needs

Gas Pipelines



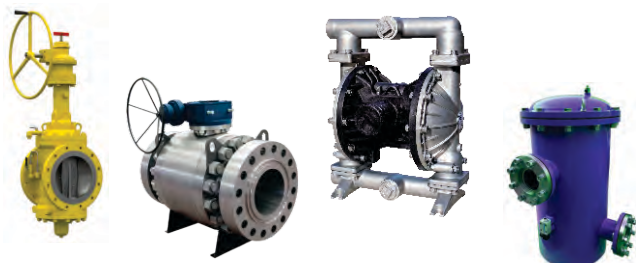
At Winnellie Valve & Process we appreciate that valves are a critical part of the pipeline network, and when they are required to close they need to close. That's why we only represent high quality manufacturers who have many years experience in the gas pipeline industry. We also represent CECO Peerless for all your filter and coalescer needs.

LNG Processing



When it comes to quality there is no margin for error in the LNG processing industry, which is why Winnellie Valve & Process represent some of the most experienced cryogenic valve manufacturers in the world. Whether it is a ball, gate, globe, check or butterfly valve we have a solution for you.

Defence



Defence industry refuelling applications require high quality valves to exacting standards. At Winnellie Valve & Process we are familiar with all of the applicable standards and carry large stocks of valves to meet each application.

Mineral Processing



From a valve perspective some of the most testing applications can be found in the mineral processing industry. Whether it is erosive, corrosive, high pressure or high pressure drop or dangerous to personnel and the environment - at Winnellie Valve & Process we work with manufacturers who can custom build a valve to suit your application.

Pulp & Paper



Whether it's HP steam and water in the cogeneration plant, liquids in the pulp mills or low-pressure steam and condensate around the paper machines, Winnellie Valve & Process understands pulp and paper mills and the challenges that you face from a valve perspective. This makes us the partner of choice for plants throughout Australia.

Marine Hydraulics



Winnellie Hydraulics supports a wide range of marine applications, including control and automation systems, deck equipment, and critical valve systems. We stand ready to handle any emergency breakdown or regular maintenance, such as filter changes, hose replacement, lubrication, cylinder resealing, and more, keeping marine hydraulic systems performing reliably.

THE WINNELLIE GROUP

TECHNICAL SPECIALISTS

Trust our agile, Australian company to exceed your expectations



- ✓ **Traceability:** NATA, UKAS, Material certification and COC provided as standard
- ✓ **Experienced:** Proven offshore, floating and onshore supply chain partner
- ✓ **Multi-Disciplined:** Supply, service, calibration and technical support geared for O&M
- ✓ **Technical:** Provide technical advice and support, not just products
- ✓ **Flexible:** Operating, commercial and contract models
- ✓ **Deliver:** Excellent track record meeting QSE targets and company KPIs
- ✓ **Teamwork:** We have an integrated team environment focussed on working together with the client
- ✓ **Community:** Equal opportunities environment with regular ATSI engagement and employment
- ✓ **Sustainable:** Second generation family business operating for over 35 years



NT 08 8984 4939 SA 08 8297 9700 WA 08 6119 3731 Vic 03 4320 0812 Qld & Asia Pacific 07 5607 1262

| OIL & GAS | MINING | LNG | PIPELINES | MARINE | DEFENCE |



winnelliehydraulics.com

waltan.com.au

winnellievalves.com